

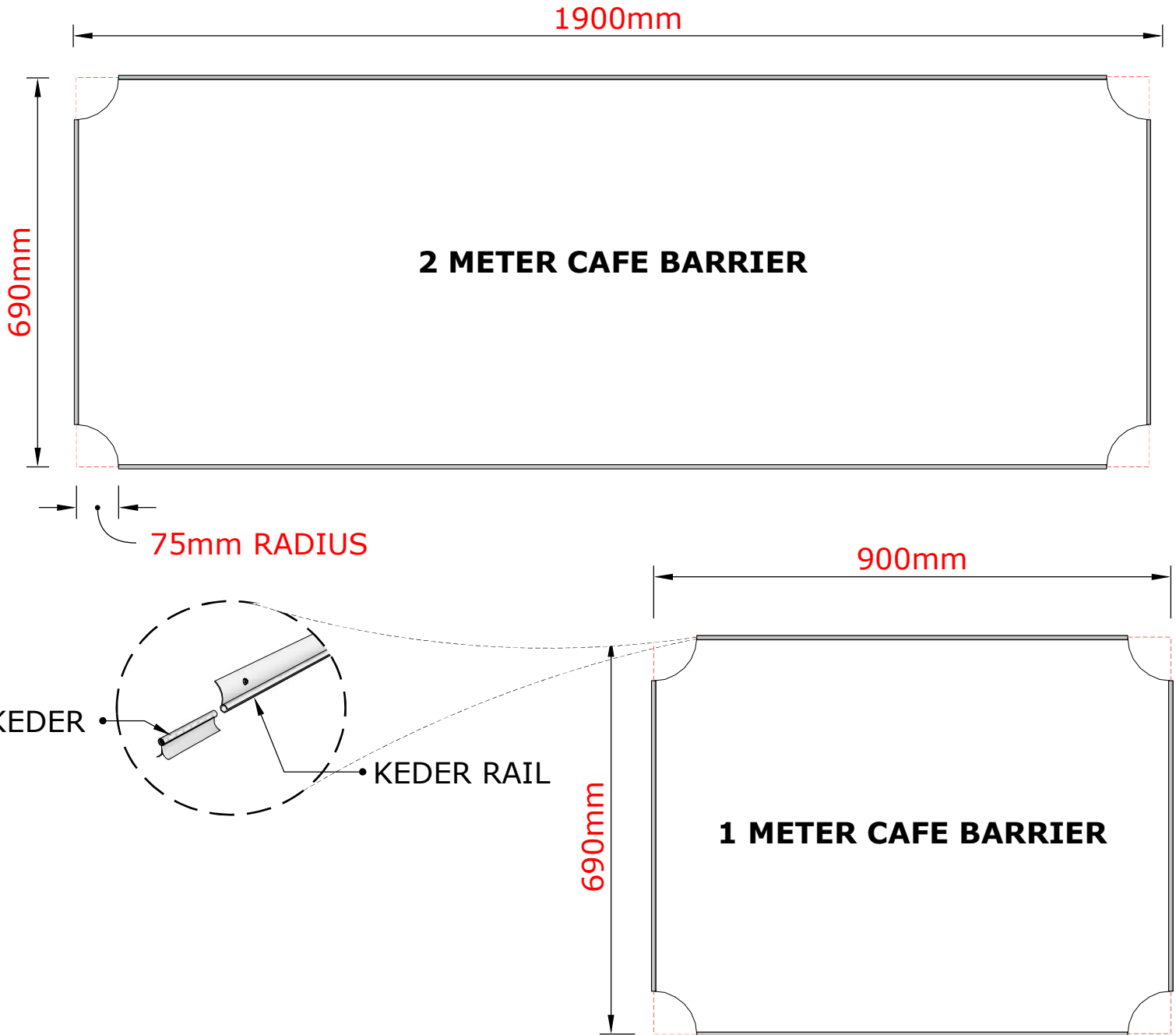
CAFE BARRIER

INSTRUCTION SHEET



FOTOSKIN YOUR WORLD

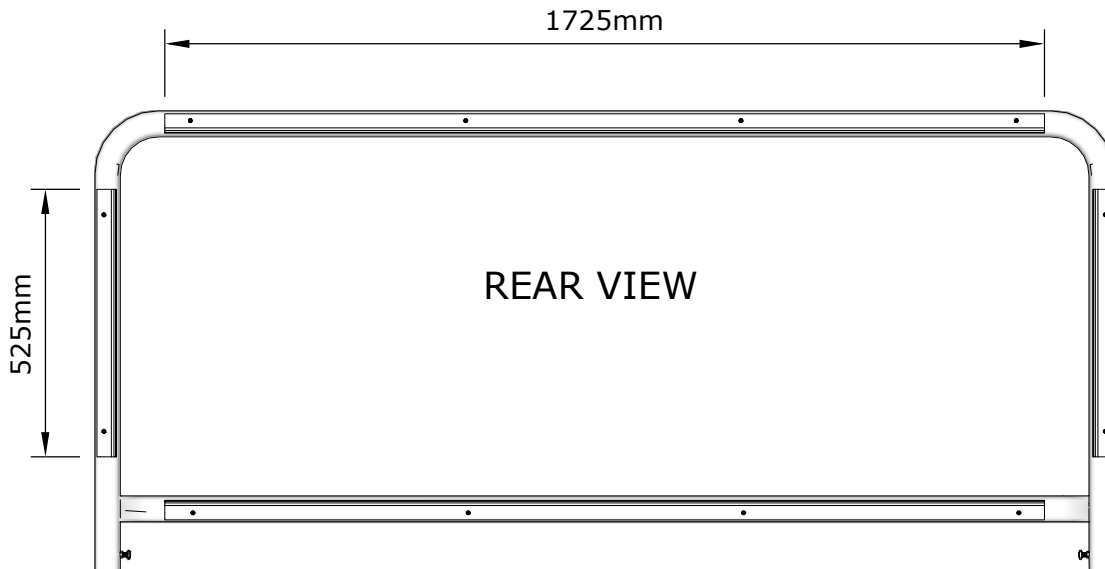
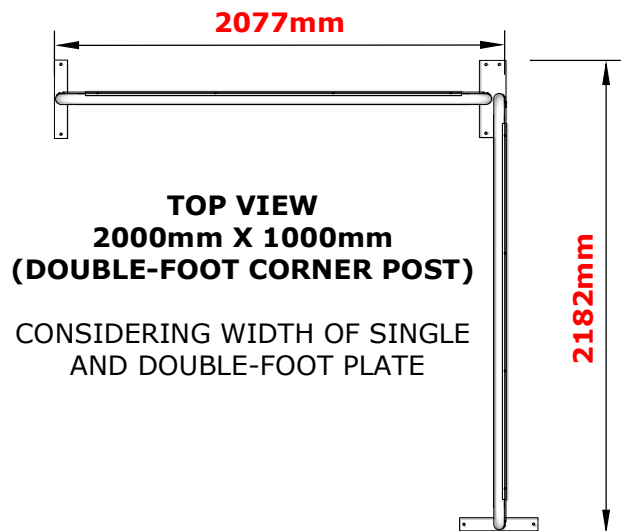
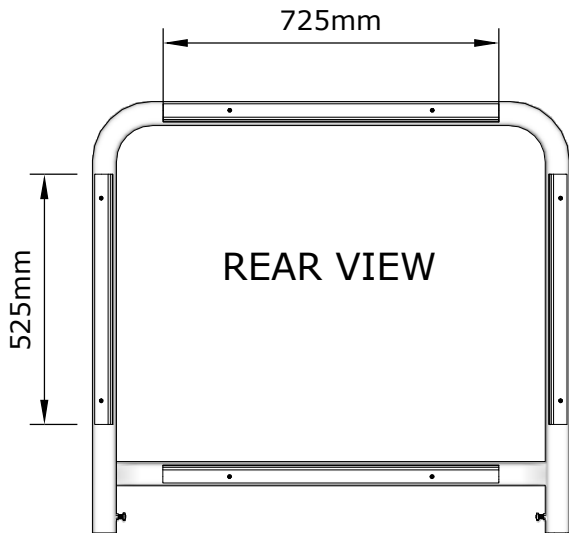
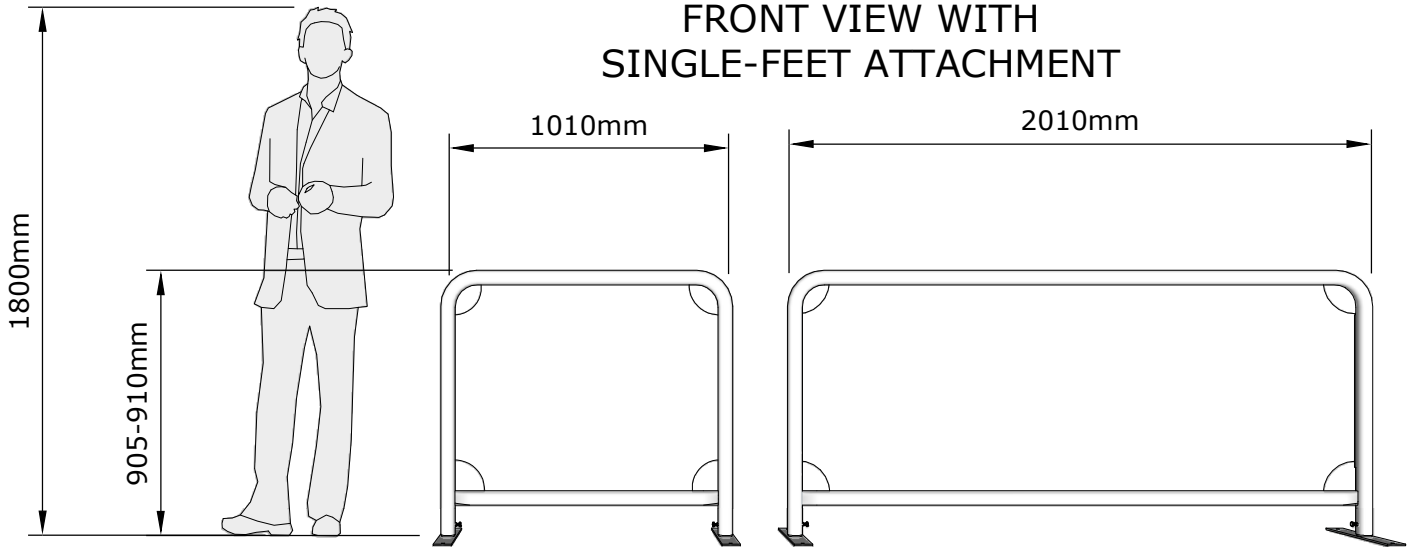
GRAPHIC DIMENSIONS



DISCLAIMER:
DIMENSIONS MAY CHANGE SLIGHTLY
DEPENDING ON MATERIAL USED AND
THE STRETCH.

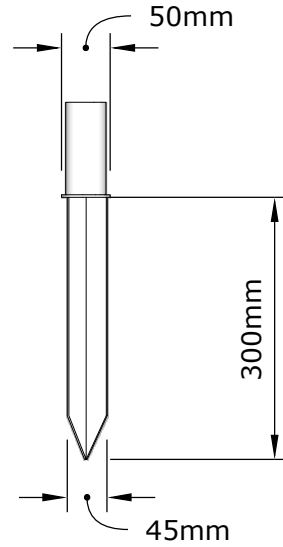
SPECIFICATIONS

FRONT VIEW WITH
SINGLE-FEET ATTACHMENT

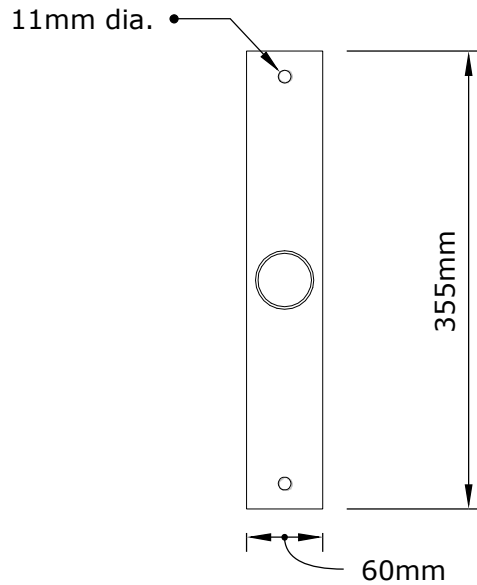
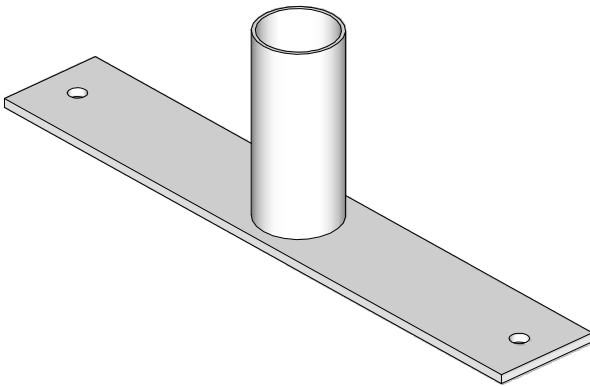


FEET OPTIONS AND SPECIFICATIONS

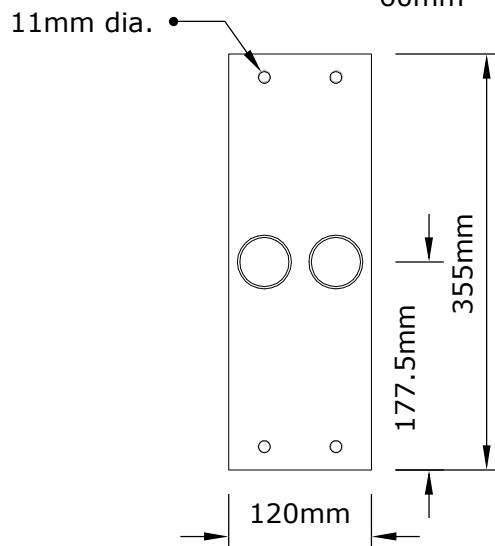
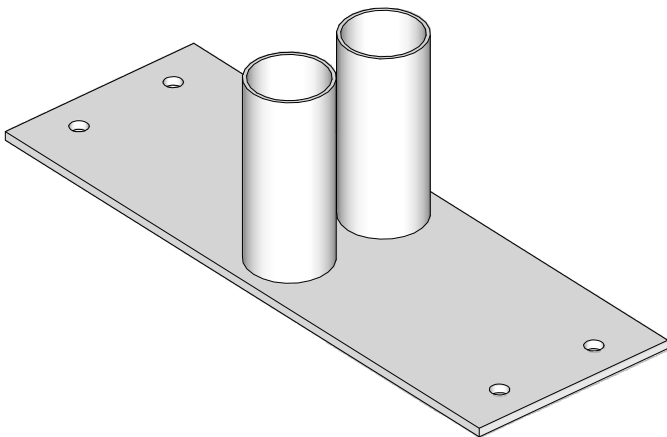
1. GRASS AND SAND FOOT PRODUCT CODE: ET4 - 2765



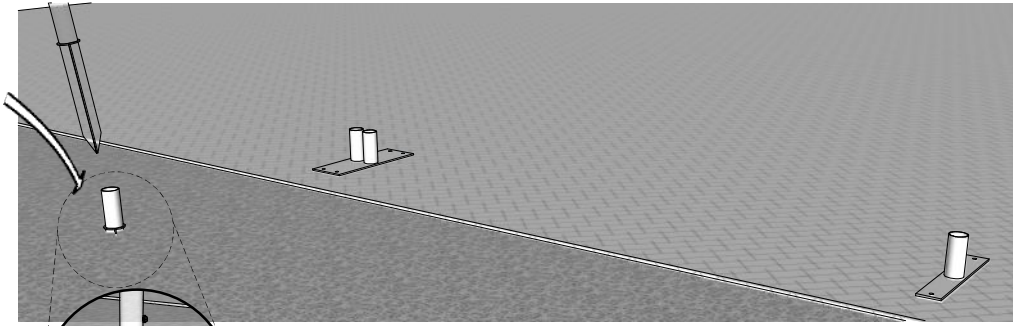
2. SINGLE FOOT PRODUCT CODE: ET4 - 2760



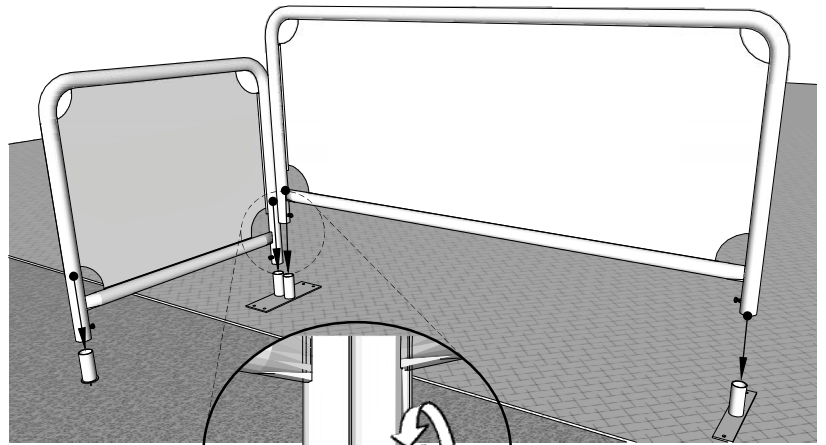
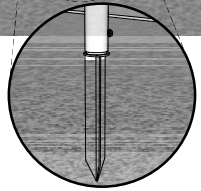
3. DOUBLE-FOOT PRODUCT CODE: ET4 - 2762



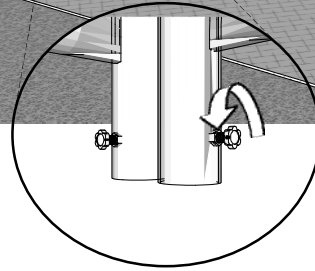
INSTALLATION



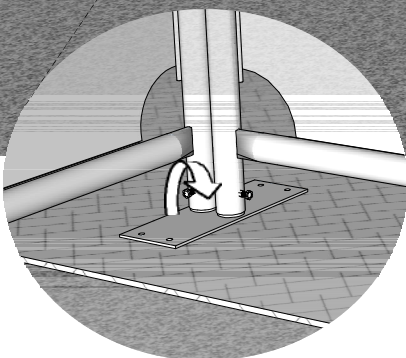
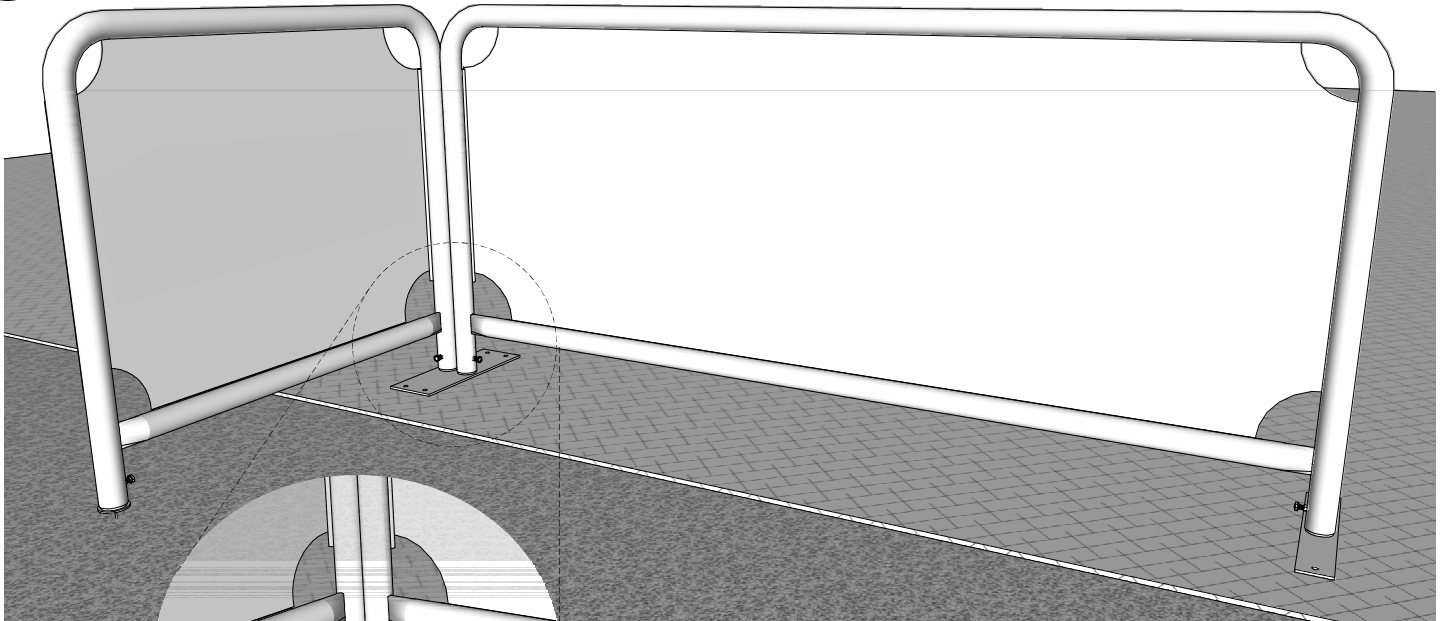
①



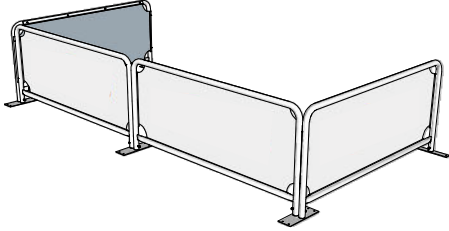
②



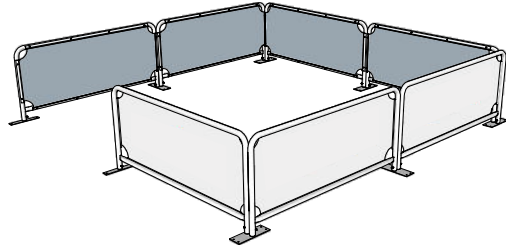
③



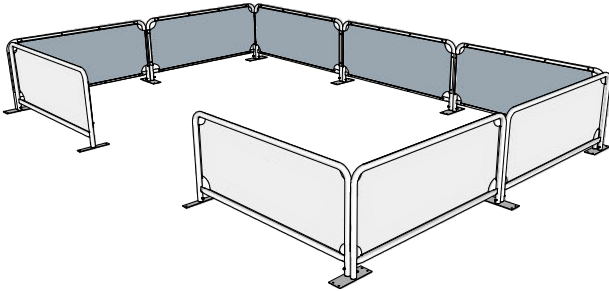
CONFIGURATIONS



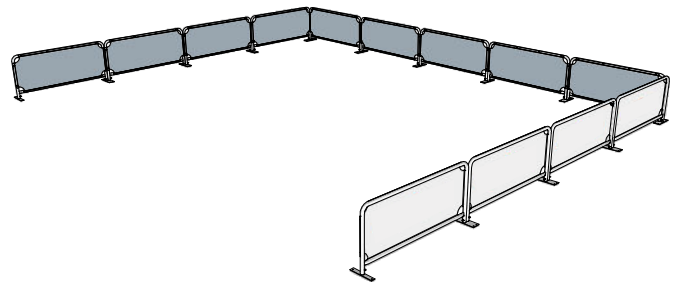
5 POST CONFIGURATION
INCLUDES 4 BANNERS
1 COLOR HEAT TRANSFER



8 POST CONFIGURATION
INCLUDES 7 BANNERS
1 COLOR HEAT TRANSFER



10 POST CONFIGURATION
INCLUDES 9 BANNERS
1 COLOR HEAT TRANSFER



14 POST CONFIGURATION
INCLUDES 13 BANNERS
1 COLOR HEAT TRANSFER